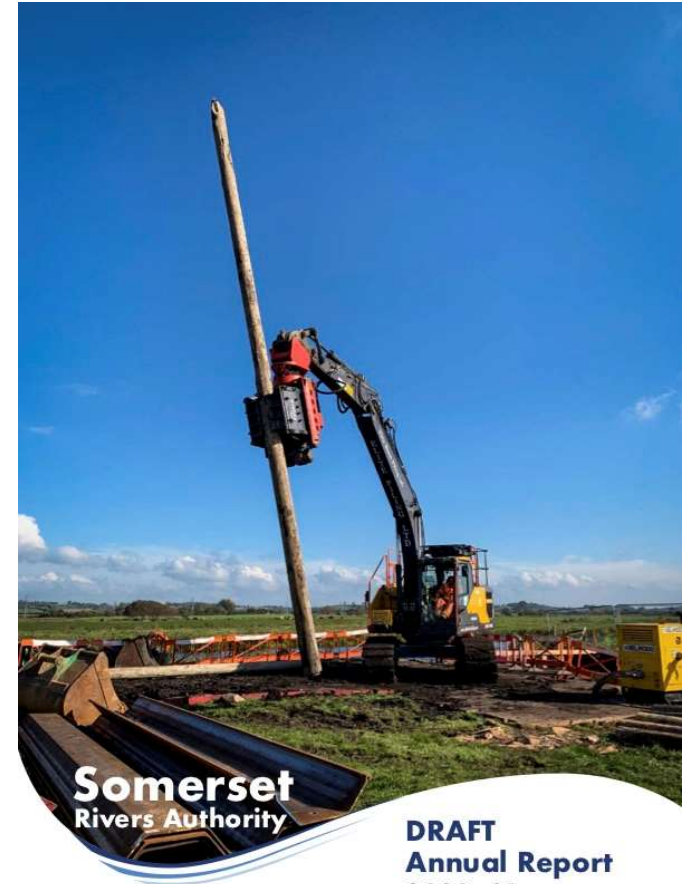

Somerset Rivers Authority

The logo graphic consists of three curved lines that sweep upwards from left to right, positioned below the text. The top line is a dark blue, the middle line is a medium blue, and the bottom line is a light blue.

Presentation for SRA Joint Scrutiny Panel 2 July 2021

2020-21 SRA Draft Annual Report

- Lots still going on, despite Covid-19 pandemic restrictions
- Dredging of River Parrett, progress with major & smaller projects
- 180+ Slow the Flow activities
- Focus on SuDS (Sustainable Drainage Systems)
- Extra work to stop roads flooding, plans & studies
- Building Local Resilience



W1 Dredging & River Management

- 1.37 miles of River Parrett dredged using water injection techniques
- Combined with silt monitoring
- Sowy – King’s Sedgemoor Drain Environmental Statement success
- 100 water level control structures upgraded at three important sites
- Strategic Approach to Mitigation plan devised and approved



W1 projects

- Bridgwater Tidal Barrier application awaiting decision from Defra SoS
- Progress with big Taunton scheme
- North Drain Pumping Station 2nd phase repairs + improvements
- SRA contributed £100,000 to new Highbridge pumping station
- Langport flow station designed to collect data from 478 square miles



W2 Land Management with NFM

- 12 capital grant schemes with mix of measures. Photos are from above Mud Pool at Selworthy, before and after



W2 Natural Flood Management

- Other capital grant schemes from the other side of Somerset include tree planting at Stoney Stoke, swale at Queen Camel



W2 Natural Flood Management

- 6 Triple C schemes across Somerset, lots of measures in one place at Montacute (below)



Above: Pond at Witham Friary near Frome

W2 Land Management with NFM

- 119 successful auction bids. Below: Bower Hinton, Holywell Lake



Land Management including NFM

- 19 highways referrals, 3 soil visits. Below, road near Tintinhull.



W2 Natural Flood Management

- New swale above B3227 landslide at Preston Bowyer east of Milverton



Land Management including NFM

- 23 Trees for Water schemes



W3 Urban Water Management

- Focus on SuDS
- Somerset Local Standards
- SuDS inspections
- Taunton tree pits
- Works in Rode



W4 Resilient Infrastructure

- Extra drain-jetting at 209 places
- Drainage upgrades in Bruton
- A39 Carhampton scheme designed
- A38 Blackbird Bends study



W4 Resilient Infrastructure

- New silt traps at Bonnings Lane in Barrington, and in the Crimchard area of Chard



Building Local Resilience

- Covid-19 restrictions made it difficult to carry out face-to-face community engagement
- Annual community resilience event held online instead with videos + training
- Grant to Rotary for PPE gear for distribution to local communities



“Greater resilience to climate and economic change”

- Adapting the Levels funded by EU Interreg 2 Seas + SRA
- Aim to get people & organisations co-operating & adapting to water related effects of climate change
- Make marginal landscapes easier to manage – new Moor Associations
- Seeking and building consensus
- Report published, tools developed



LEP spending 2014-2021

- £13.049 million awarded in 2014
- Dredging activities – including study leading to water injection dredging
- Sowy-KSD works, eg at Beer Wall
- Accelerating Bridgwater Tidal Barrier
- Part-funding major Taunton scheme
- 2 projects in River Brue catchment
- 120 NFM schemes, only 40 expected
- 91% spent, rest to go on Sowy-KSD



Somerset Rivers Authority

The logo graphic consists of three curved lines that sweep upwards from left to right, positioned below the text 'Somerset Rivers Authority'. The top line is a dark blue, the middle line is a medium blue, and the bottom line is a light blue.

- SRA Board asked to approve Annual Report on 23 July
 - Report to be distributed widely
 - Thank you for listening. Any questions?
-